

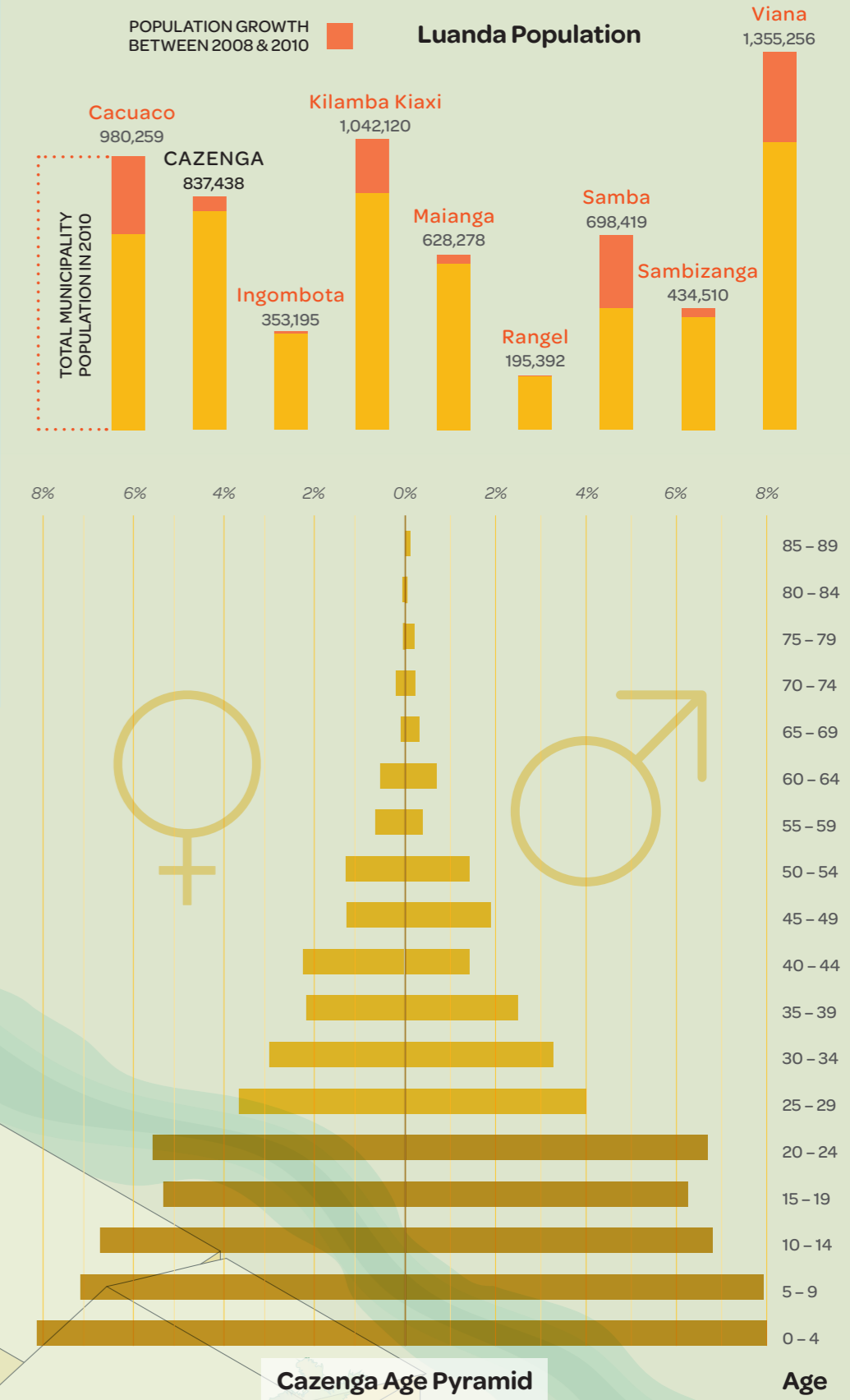
Cazenga Atlas

Cazenga is growing everyday as people move to Luanda and come to the area to find housing. The arrival of so many new people influences what kinds of housing are available, what streets are like, and whether people face physical risks.

Population

Population estimates of Cazenga differ. For example, the official estimation of Cazenga's population is 668,000. These differences have major implications in regards to the levels of basic services that need to be provided.

Cazenga has a "youth bulge" since over one-third of residents are under the age of 24.



HEALTH

THE CAZENGA MOSQUITO NET DISTRIBUTION PROGRAM LAUNCHED IN APRIL 2012. IT IS COORDINATED BY THE MINISTRY OF HEALTH WITH THE HELP OF LOCAL HEALTH FACILITIES AND CRÉCHES.

SANITATION

LATRINES WERE INSTALLED BY LOCAL GOVERNMENT AND NGOS ACROSS CAZENGA FOR THE COMMUNITY LATRINE PROGRAM BETWEEN 2004 AND 2006.

EDUCATION

CRÉCHES ARE COMMUNITY-DRIVEN EDUCATION PROGRAMS THAT PREPARE CHILDREN TO QUALIFY FOR ENTRANCE TO PUBLIC ELEMENTARY SCHOOL AT AGE SIX.

"THERE ARE ALWAYS NEW PEOPLE."

"EVERYONE WANTS TO LIVE IN A BETTER HOUSE."

HOUSING

THE KIXICASA MICRO-FINANCE PROGRAM PROVIDES FAMILIES IN HUAMBO WITH THE OPPORTUNITY TO ACCESS SMALL LOANS TO IMPROVE THEIR HOUSES.

"IT'S BAD DUE TO THE POOR DRAINAGE AND LACK OF SANITATION."

"IMPROVED! NOW WATER IS NOT LACKING FROM THE STANDPIPE LIKE BEFORE."

SOLID WASTE

LOCAL WASTE COLLECTION IS A MUNICIPAL SERVICE THAT AIMS TO IMPROVE HEALTH CONDITIONS IN CAZENGA BY REMOVING RUBBISH WITH TRACTORS OPERATED BY RESIDENTS.

WATER

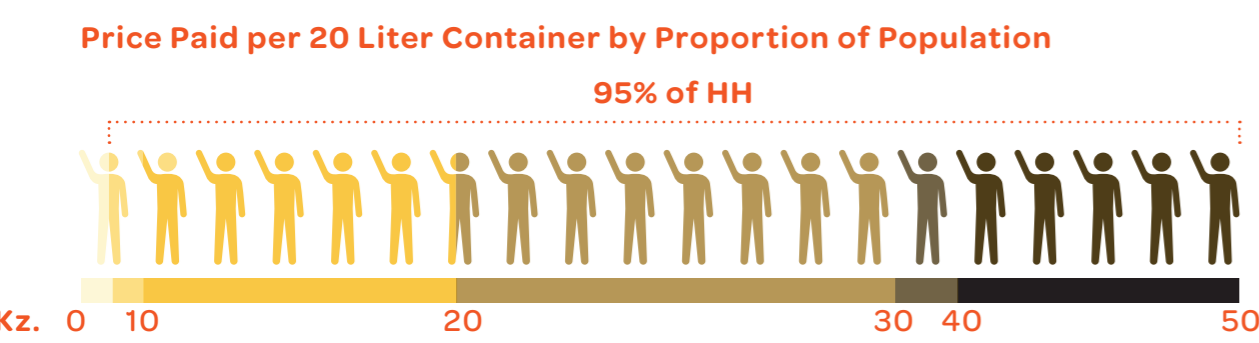
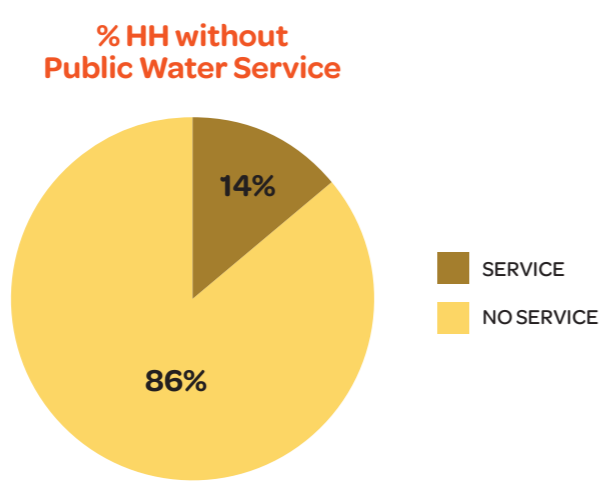
AMOGECs ARE RESIDENT COMMITTEES WHO VOLUNTEER TO SUPPORT WATER DISTRIBUTION FOR THEIR BAIRROS.

Survey Results

In 2012, the Forum surveyed over 3,000 households about basic services and conditions in Cazenga. The result of the survey are presented in the Cazenga Atlas along with other data collected by Development Workshop. The atlas can be downloaded at <http://cazenega.forum.angonet.org>.

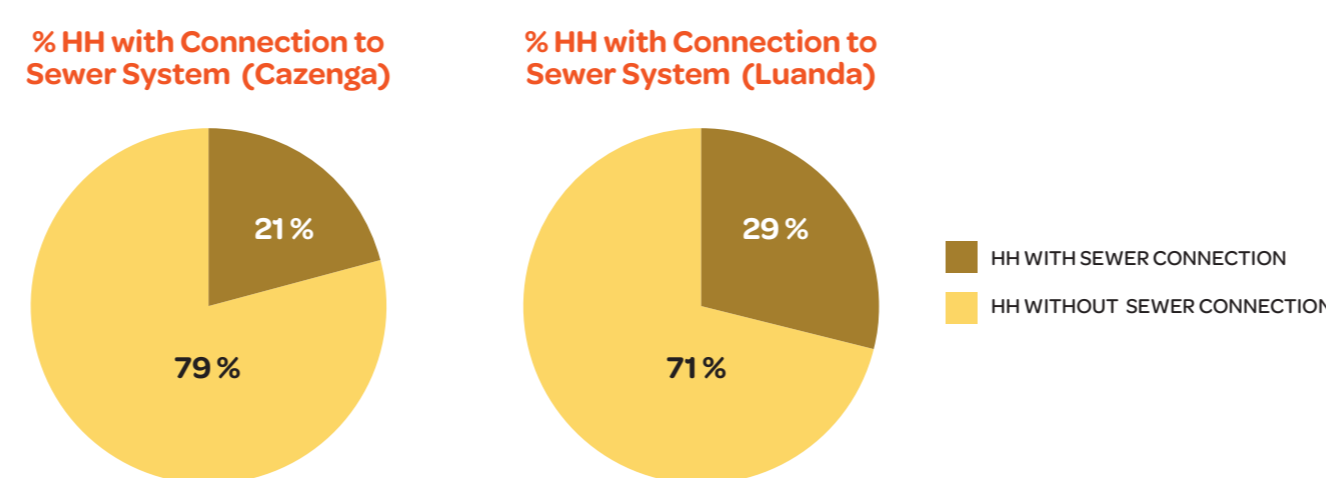
Water

Gaps in public services result in high prices for water for residents. Only 14% of residents have public water service in Cazenga.



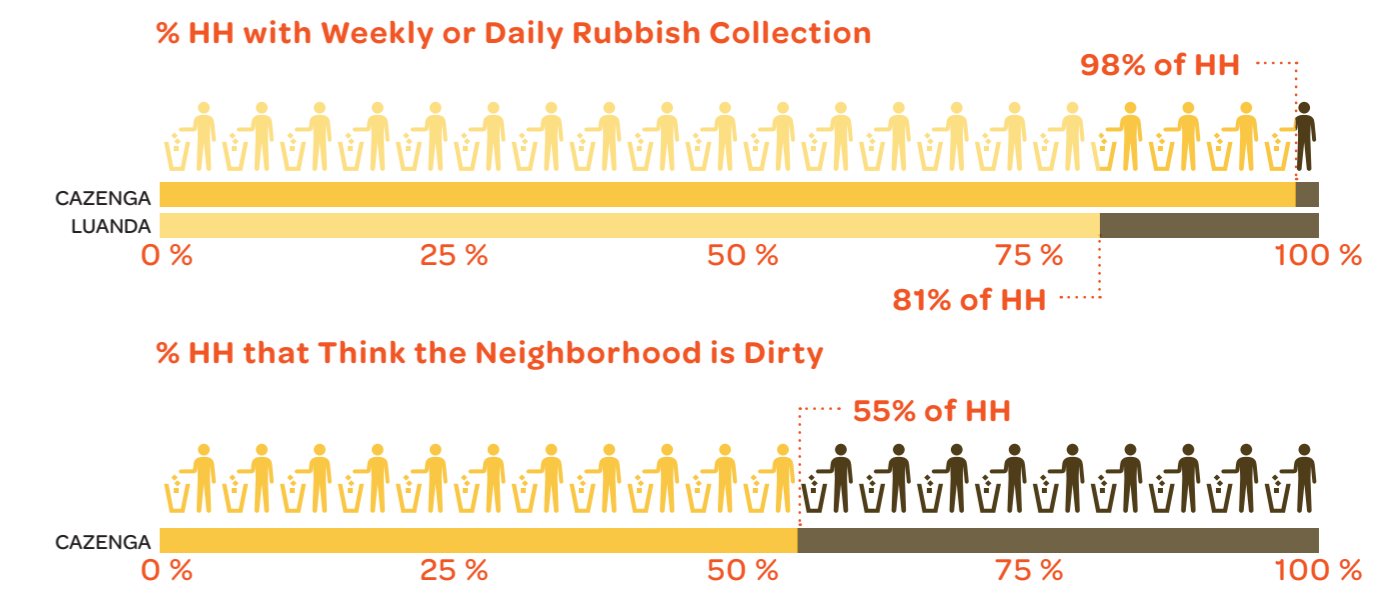
Sanitation

Lack of sanitation facilities in Cazenga leads to high levels of waterborne disease. Only 21% of households have a connection to a sewer system.



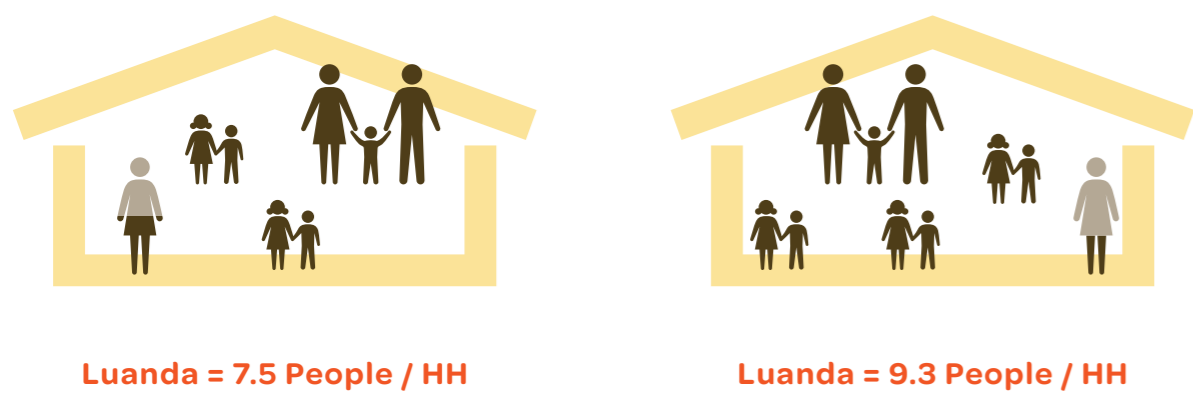
Solid Waste

More households report weekly rubbish collection in Cazenga than in Luanda as a whole.



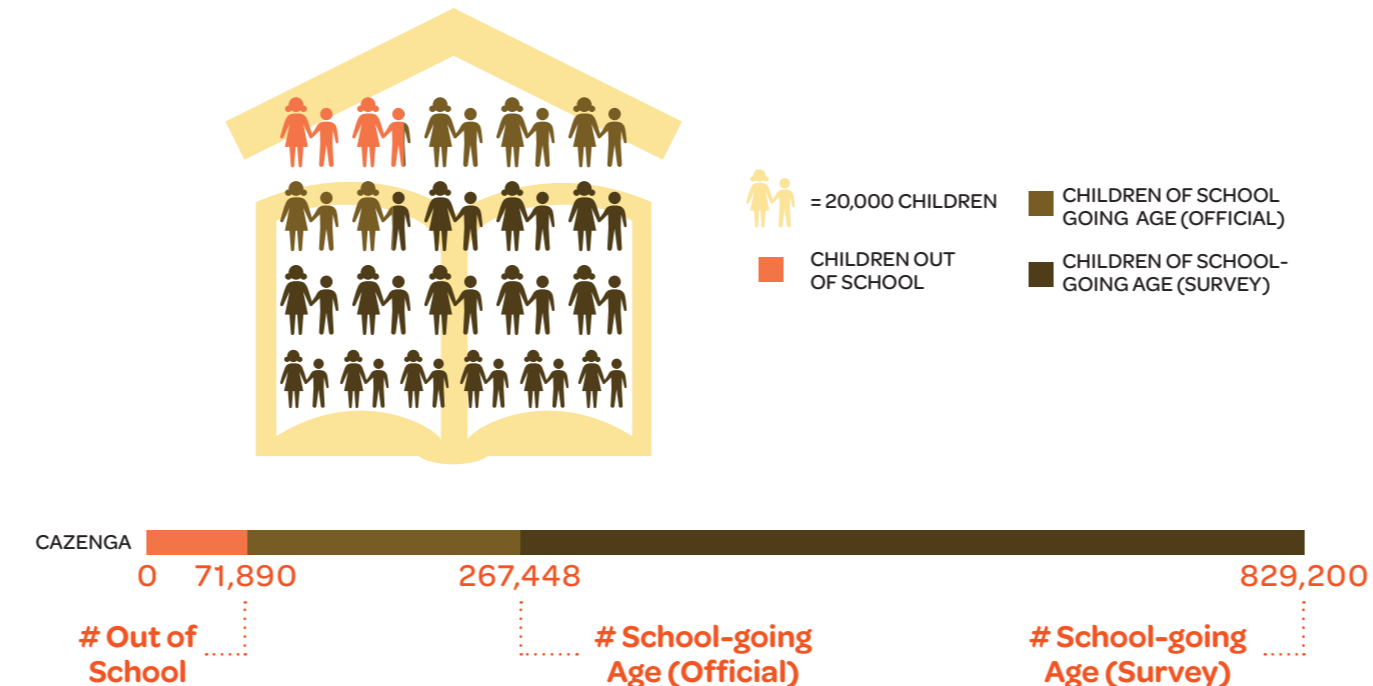
Housing

As more people move to Cazenga, physical vulnerabilities that result from overcrowding in housing and living in areas near lagoons and gullies increases.



Education

Inadequate provision of schools in Cazenga today means that it will be even more challenging to meet the needs of future children.



Health

There are only nine public health facilities in Cazenga to serve over 1 million residents. This results in very high incidences of diseases, especially among children.

